



Baldocks Road, Essex, CM16

BUTLER & STAG





**\*Available May 2021\***  
**Situated in the heart of**  
**Theydon Bois is this**  
**stunning two bedroom**  
**semi detached**  
**bungalow.**



- Two Bedroom Semi Detached Bungalow
- Spacious Lounge/Dinning Area
- Detached Garage
- New Refurbished Throughout
- Off-Street Parking For Two/Three Vehicles
- 85 Ft Rear Garden

The property has been refurbished to a very high standard throughout by its current owners and offers an abundance of living space. Accommodation consists of a large formal L-shape living/dinning room, wonderfully appointed kitchen breakfast room, two good sized double bedrooms and a fully fitted family bathroom.

Externally, the property boasts generous off street parking for two/three vehicles via the block paved driveway with access leading onto a detached garage and a beautifully landscaped 'low maintenance south facing rear garden with patio and ample amounts of outside storage.

Baldocks Road is a much sought after turning in the ever popular village of Theydon Bois. The village is arranged around the green and offers a parade of shops, several pubs and restaurants and easy access into Epping Forest. Transport links into London are excellent. Theydon Bois underground station is in walking distance and there are several well regarded state and private schools within easy reach. Local leisure facilities include golf courses, sports centres and a tennis club.



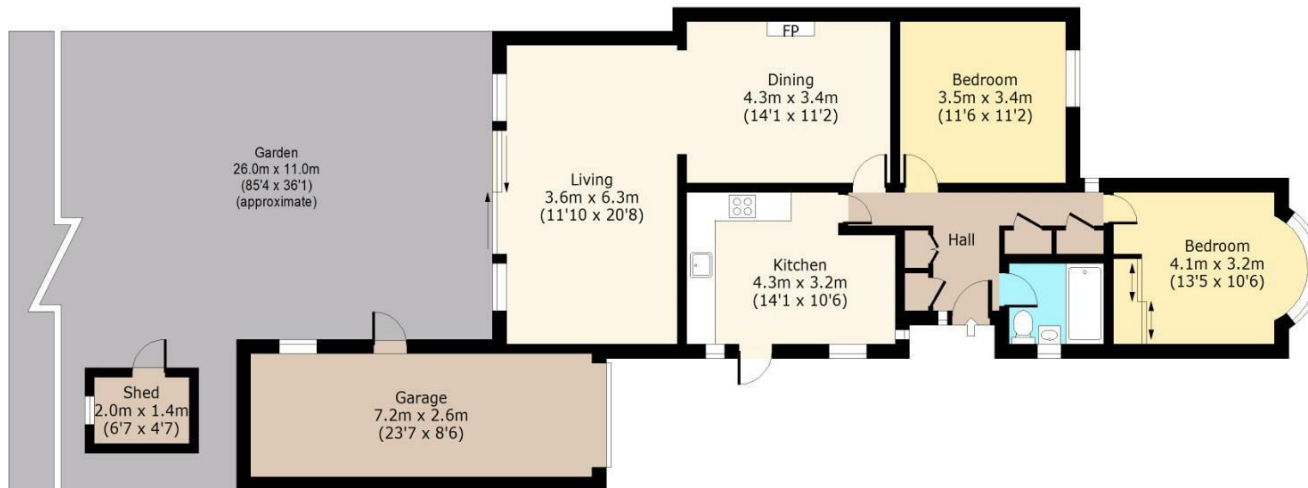




## Baldocks Road

### Ground Floor

Approx. 92 Sq. meters (990 Sq. feet)



Total area(Including Garage): approx. 111 Sq. meters (1195 Sq. feet)

Total area(Excluding Garage): approx. 92 Sq. meters (990 Sq. feet)

For illustration purposes only - not to scale

[www.lapplus.com](http://www.lapplus.com)

# BUTLER & STAG

☎ 01992 667666

🏠 4 Forest Drive, Theydon Bois, Essex, CM16 7EY

✉ [theydon@butlerandstag.com](mailto:theydon@butlerandstag.com)

[www.butlerandstag.uk](http://www.butlerandstag.uk)

IMPORTANT NOTICE - These particulars have been prepared in good faith and they are not intended to constitute part of an offer or contract. We have not performed a structural survey on this property and the services, appliances and specific fittings have not been tested. All photographs, measurements, floor plans and distances referred to are given as a guide and should not be relied upon.